

Switch

Getting from There to Here



www.columbiaacademy.com

When it comes to *switching schools*,

there are lots of

REASONS TO MAKE A CHANGE

RELOCATION

SOCIAL ISSUES

ACADEMIC CHALLENGES



When it comes to switching schools, there's a lot at stake. As a parent you know that your child's learning environment impacts much more than just grades. It influences how they grow socially, emotionally, academically, and physically. Families who are able to find the right fit see their children thrive in the classroom and beyond.

So what exactly warrants a switch?

There are a lot of good reasons to consider changing schools. Maybe you're relocating and your current school will no longer be accessible. Perhaps your child is dealing with social issues and you're looking for a more positive atmosphere. Many families desire a nurturing environment that focuses on academic preparedness, as well as social and emotional growth — where children gain confidence to pursue their unique passions. Parents and students alike want to know they are going to find community and receive the support they need on their educational journey.

Whatever your reasons, we're glad you're here.

Columbia Academy is an encouraging and fun environment for children 6 weeks to 8th grade. This guide was designed for parents and families just like you—who are exploring a change and want to make sure they get it right. On the pages ahead, we'll walk you through our educational model, show you the opportunities your child will have as a Columbia Academy student, and provide you with details on next steps.

The switching process is simple, and we're here to help. If you have any questions, please contact us at [\(410\) 312-5233](tel:4103125233) or admissions@columbiaacademy.com. We look forward to speaking with you.

Sincerely,

Gina Driscoll

DIRECTOR OF MARKETING AND COMMUNICATIONS



OUR MODEL



Creative Teaching. Meaningful Learning.

At Columbia Academy, we cultivate advantageous learning opportunities that allow every student to become a responsible, valuable member of his or her community.

GRADES SERVED

Infant – 8th grade

FIVE CAMPUS LOCATIONS

Preschool at Kendall Ridge

Preschool at Kings Contrivance

Preschool at Maple Lawn

Preschool at Thunder Hill

Columbia Academy Elementary and Middle



GROWING STUDENTS

academically, emotionally, socially, and physically.



Academic Preparedness



At Columbia Academy, children are known by name and cared for as they grow to recognize their full potential. Utilizing differentiated instruction to meet the needs and interests of each learner, teachers design creative lessons that bring content to life. Coursework not only aligns with Common Core standards, but national standards as well.



Total-body Wellness

We recognize the importance of active play, which is why we've secured over 85,000 square feet of outdoor activity space across our campuses. Preschool students enjoy outdoor play at least twice daily for 30-minutes, while elementary and middle school students are provided with 30-minutes of outdoor play during the academic day.

Small by Design

Classes are kept small to promote a strong sense of community and to ensure each student receives individualized attention.

- Infants: 1 to 3 (max group size of 6)
- Toddlers: 1 to 3 (max group size of 6)
- 2 year olds: 1 to 6 (max group size of 12)
- 3 or 4 year olds: 1 to 10 (max group size of 20)
- 5 years and older: 1 to 15 (max group size of 30)



Creative Minds

Elementary and Middle School students can explore the **Fine Arts** through:

- Choir
- Orchestra
- Fine Arts
- Band
- Abrakadoodle

Beyond the Classroom

Students can discover their passions as they build character and lifelong friendships through enriched learning experiences that offer a deeper connection to our close-knit community.

EXTRACURRICULAR OFFERINGS

- SciKids
- Girls on the Run
- Yearbook Club
- Cooking Club
- Chess Club
- Basketball
- Soccer Shots
- Wrestling
- Tennis
- Ballet



Extended Care Program

Our Before and After School Care Program is designed to complement the academic day with scheduled activities that include snack time, outdoor play, art projects, and games.

BEFORE CARE

6:30- 8:30am

AFTER CARE

3:30 - 6:30 pm

TEMPORARY COVID HOURS

7:00 am - 6:00 pm



Service Opportunities

Students are encouraged to positively impact their community through school-based volunteering and partnering with the Howard County Food Bank and Grassroots Crisis Intervention. Middle School students earn a minimum of 10 service hours each year as they help give back to their community.



A Safe Environment

As part of our commitment to care for the whole child, Columbia Academy has established physical, emotional, and social safety procedures to promote health and wellness. These include mandatory staff training courses and evaluations, student support, a Peacemaking Program (preschool) and Virtue of the Month Program (elementary and middle school), a zero tolerance policy for bullying, campus security, and monthly drills to practice emergency situations.

Concerned about how a private education might fit your family's budget?

Columbia Academy may be more affordable than you think!

Columbia Academy offers tuition assistance, scholarships, and sibling discounts to eligible families. [Contact Admissions](#) to see what tuition might look like for your family.



Preschool Tuition & Fees

Program	Half Day*	Academic Day	Full Day	Registration
Infant & Toddler Program	-	-	\$2,215	\$100
K-Prep 2	\$1,460	\$1,631	\$1,800	\$100
K-Prep 3 & 4	\$1,418	\$1,585	\$1,750	\$100

** Half Day programs run from 9:00 a.m. to 12:00 p.m., five days a week. Academic Day programs run from 9:00 a.m. to 3:00 p.m., five days a week.*

Elementary and Middle School Tuition & Fees

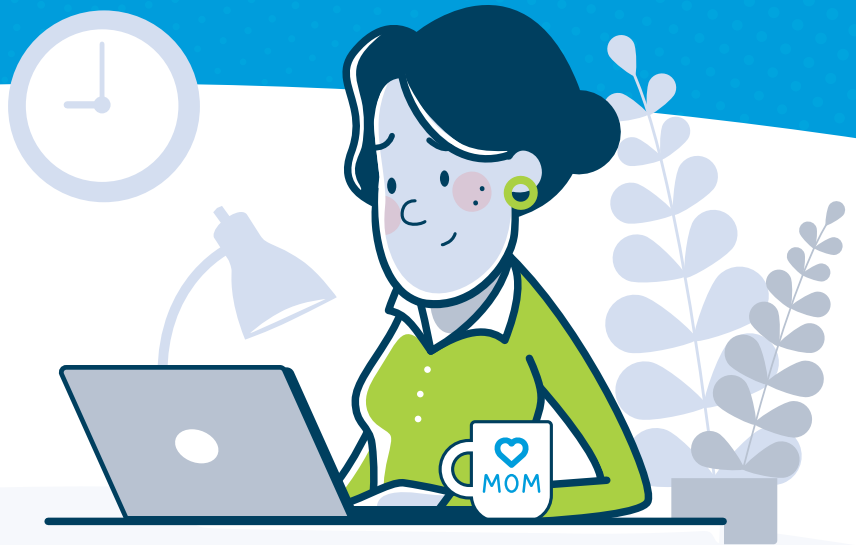
Program	Tuition	After Care Program	Activity Fee	Book/Tech Fee	Application Fee
Transitional Kindergarten	\$11,990	\$3,800	\$400	\$325	\$100
Grades K-4	\$12,208	\$3,800	\$450	\$350	\$100
Grades 5-8	\$12,535	\$3,800	\$500	\$375	\$100

Registration fees are non-refundable and non-transferable across all programs.

“ We have had our three children in Columbia Academy since they were in preschool. We keep coming back year after year because we appreciate CA’s focus on values, attention to each individual student, highly dedicated teachers, and the sense of family that CA fosters. The small class sizes allow the students and teachers to establish a caring and focused classroom where our kids are challenged and supported to be their best.”

THE PROCESS

*Ready to
Switch?*



Here are the next steps to setting up your child for success at Columbia Academy.

1

Schedule a virtual meeting or attend a Virtual Open House.

Contact us at [\(410\) 312-5233](tel:4103125233) or visit columbiaacademy.com to register for a virtual open house.

2

Be ready to discuss the following:

- A list of questions about our school
- Goals for your student
- Challenges at your current school

3

Complete the application online.

Visit columbiaacademy.com to select the campus that is right for you and apply using our easy to use online application.

4

Wait to hear from us!

Once your child's application is complete, we will be in touch shortly.



We're ready to help you make the switch!



**Contact us today to discuss how your child
can thrive at Columbia Academy.**



www.columbiaacademy.com

Preschool at Kendall Ridge

6000 University Blvd.
Ellicott City, MD 21043

Preschool at Kings Contrivance

10380 Old Columbia Rd.
Columbia, MD 21046

Preschool at Maple Lawn

7425 Maple Lawn Blvd.
Fulton, MD 20759

Preschool at Thunder Hill

9210 Route 108
Columbia, MD 21045

Elementary and Middle School

10350 Old Columbia Rd.
Columbia, MD 21046

CONTACT US

admissions@columbiaacademy.com
[\(410\) 312-5233](tel:4103125233)